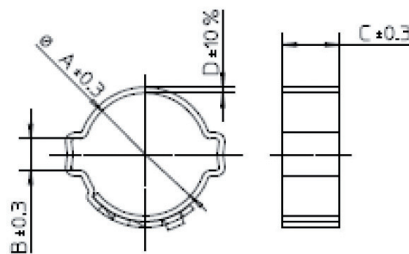
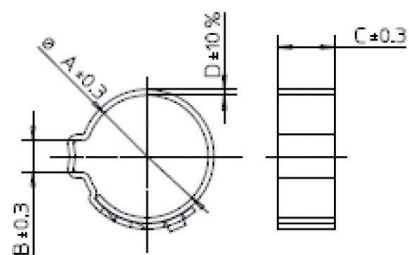


CL (1-2 ears)

One and two-ear clips are the most economical choice for fastening small and medium diameter hoses with a fast and easy application. A pneumatic tool is available for large volume applications.



CODE	RANGE Ø	SUPPLIED Ø	BAND WIDTH	BAND THICKNESS
	mm	mm	mm	mm
CL1007/C	5-7	7,1	7	0,6
CL1009/C	7-9	9,1	7	0,6
CL1011/C	9-11	11,1	7	0,6
CL1012/C	10-12	12,1	7	0,6
CL1013/C	11-13	13,1	7	0,6
CL1015/C	13-15	15,1	7	0,6
CL1017/C	14-17	17,3	7	0,6
CL1018/C	15-18	18,3	7	0,6
CL1020/C	17-20	20,3	10	1
CL1021/C	18-21	21,3	10	1
CL1023/C	20-23	23,3	10	1
CL1025/C	22-25	25,3	10	1
CL1027/C	23-27	27,3	10	1
CL1028/C	25-28	28,3	10	1
CL1031/C	28-31	31,3	10	1
CL1034/C	31-34	34,3	10	1
CL1037/C	34-37	37,3	10	1
CL1040/C	37-40	40,3	10	1



CODE	RANGE Ø	SUPPLIED Ø	BAND WIDTH	BAND THICKNESS
	mm	mm	mm	mm
CL070-1/C	5-7	7,1	7	0,6
CL090-1/C	7-9	9,1	7	0,6
CL100-1/C	8-10	10,1	7	0,6
CL110-1/C	9-11	11,1	7	0,6
CL120-1/C	10-12	12,1	7	0,6
CL130-1/C	11-13	13,1	7	0,6
CL140-1/C	12-14	14,1	7	0,6
CL150-1/C	13-15	15,1	7	0,6
CL160-1/C	14-16	16,1	7	0,6
CL170-1/C	15-17	17,3	7	0,6
CL180-1/C	16-18	18,3	7	0,6
CL190-1/C	17-19	19,3	10	1
CL210-1/C	18-21	21,3	10	1
CL230-1/C	20-23	23,3	10	1
CL250-1/C	22-25	25,3	10	1
CL270-1/C	23-27	27,3	10	1
CL280-1/C	25-28	28,3	10	1
CL310-1/C	28-31	31,3	10	1
CL340-1/C	31-34	34,3	10	1
CL370-1/C	34-37	37,3	10	1
CL400-1/C	37-40	40,3	10	1



MATERIALS



• 430 SS



• 304 SS (On request)



For further details see pag. 74-75



APPLICATIONS

- Home appliances
- Electrotechnics industry
- Welding equipment
- Compressed air systems



CL TEN 1099



Pneumatic pliers